

---

## Product Datasheet

### KHSRP Antibody (orb1270015)

**Description**

KHSRP Antibody

**Species/Host**

Rabbit

**Reactivity**

Human

**Conjugation**

Unconjugated

**Tested Applications**

IF, IHC-P, WB

**Immunogen**

This KHSRP antibody is generated from rabbits immunized with a KLH conjugated synthetic peptide between 470-498 amino acids from the Central region of human KHSRP.

**Target**

KHSRP

**Preservatives**

Supplied in PBS with 0.09% (W/V) sodium azide.

**Form/Appearance**

Liquid

**Concentration**

batch dependent

**Storage**

Store at 4°C for three months and -20°C, stable for up to one year. As with all antibodies care should be taken to avoid repeated freeze thaw cycles. Antibodies should not be exposed to prolonged high temperatures.

**Note**

For research use only

**Application notes**

For WB starting dilution is: 1:1000  
For IHC-P starting dilution is: 1:50~100  
For IF starting dilution is: 1:10~50

**Isotype**

Rabbit Ig

**Clonality**

Polyclonal

**MW**

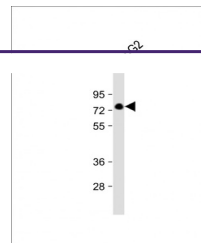
73 kDa

**Uniprot ID**
[Q92945](https://www.uniprot.org/uniprot/Q92945)
**NCBI**
[Q92945](https://www.ncbi.nlm.nih.gov/nuccore/Q92945)
**Dilution Range**

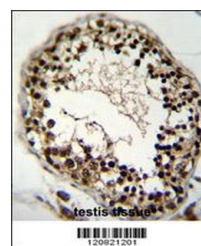
For WB starting dilution is: 1:1000  
For IHC-P starting dilution is: 1:50~100  
For IF starting dilution is: 1:10~50

**Expiration Date**

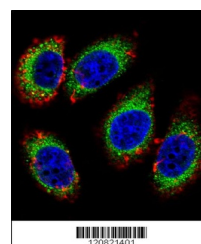
12 months from date of receipt.



Western Blot at 1:1000 dilution + HepG2 ...



KHSRP Antibody immunohistochemistry anal...



Confocal immunofluorescent analysis of K...