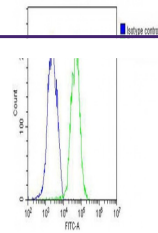
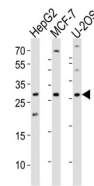

Product Datasheet

ID1 Antibody (orb1270009)

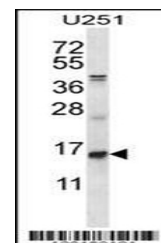
Description	ID1 Antibody
Species/Host	Rabbit
Reactivity	Human, Rat
Conjugation	Unconjugated
Tested Applications	FC, IF, IHC-P, WB
Immunogen	This ID1 antibody is generated from rabbits immunized with a KLH conjugated synthetic peptide between 66-93 amino acids from the Central region of human ID1.
Target	ID1
Preservatives	Supplied in PBS with 0.09% (W/V) sodium azide.
Form/Appearance	Liquid
Concentration	batch dependent
Storage	Store at 4°C for three months and -20°C, stable for up to one year. As with all antibodies care should be taken to avoid repeated freeze thaw cycles. Antibodies should not be exposed to prolonged high temperatures.
Note	For research use only
Application notes	For FACS starting dilution is: 1:25For WB starting dilution is: 1:1000For IHC-P starting dilution is: 1:10~50For IF starting dilution is: 1:10~50
Isotype	Rabbit Ig
Clonality	Polyclonal
MW	16 kDa
Uniprot ID	P41134
NCBI	P41134
Dilution Range	For FACS starting dilution is: 1:25For WB starting dilution is: 1:1000For IHC-P starting dilution is: 1:10~50For IF starting dilution is: 1:10~50
Expiration Date	12 months from date of receipt.



Overlay histogram showing HepG2 cells st...



Western blot analysis of lysates from He...



Western blot analysis in U251 cell line