

---

## Product Datasheet

### PURA Antibody (orb1269980)

**Description**

PURA Antibody


**Species/Host**

Rabbit

**Reactivity**

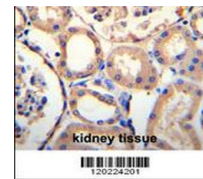
Human

**Conjugation**

Unconjugated

**Tested Applications**

IHC-P, WB



PURA Antibody immunohistochemistry analysis...

**Immunogen**

This PURA antibody is generated from rabbits immunized with a KLH conjugated synthetic peptide between 259-287 amino acids from the C-terminal region of human PURA.

**Target**

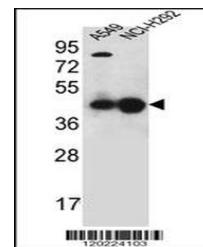
PURA

**Preservatives**

Supplied in PBS with 0.09% (W/V) sodium azide.

**Form/Appearance**

Liquid



Western blot analysis in A549, NCI-H292 ...

**Concentration**

batch dependent

**Storage**

Store at 4°C for three months and -20°C, stable for up to one year. As with all antibodies care should be taken to avoid repeated freeze thaw cycles. Antibodies should not be exposed to prolonged high temperatures.

**Note**

For research use only

**Application notes**

For IHC-P starting dilution is: 1:50~100For WB starting dilution is: 1:1000

**Isotype**

Rabbit Ig

**Clonality**

Polyclonal

**MW**

35 kDa

**Uniprot ID**
[Q00577](https://www.uniprot.org/uniprot/Q00577)
**NCBI**
[Q00577](https://www.ncbi.nlm.nih.gov/nuccore/Q00577)
**Dilution Range**

For IHC-P starting dilution is: 1:50~100For WB starting dilution is: 1:1000

**Expiration Date**

12 months from date of receipt.