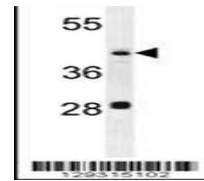


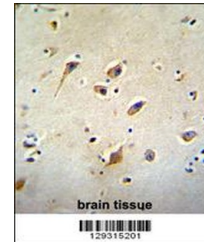
Product Datasheet

GOT1L1 Antibody (orb1269973)

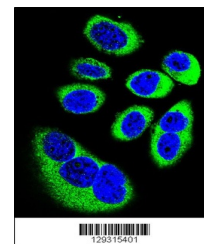
Description	GOT1L1 Antibody
Species/Host	Rabbit
Reactivity	Mouse
Conjugation	Unconjugated
Tested Applications	IF, IHC-P, WB
Immunogen	This GOT1L1 antibody is generated from rabbits immunized with a KLH conjugated synthetic peptide between 346-375 amino acids from the C-terminal region of human GOT1L1.
Target	GOT1L1
Preservatives	Supplied in PBS with 0.09% (W/V) sodium azide.
Form/Appearance	Liquid
Concentration	batch dependent
Storage	Store at 4°C for three months and -20°C, stable for up to one year. As with all antibodies care should be taken to avoid repeated freeze thaw cycles. Antibodies should not be exposed to prolonged high temperatures.
Note	For research use only
Application notes	For WB starting dilution is: 1:1000For IHC-P starting dilution is: 1:50~100For IF starting dilution is: 1:10~50
Isotype	Rabbit Ig
Clonality	Polyclonal
MW	47 kDa
Uniprot ID	Q8NHS2
NCBI	Q8NHS2
Dilution Range	For WB starting dilution is: 1:1000For IHC-P starting dilution is: 1:50~100For IF starting dilution is: 1:10~50
Expiration Date	12 months from date of receipt.



Western blot analysis in mouse kidney ti...



GOT1L1 Antibody immunohistochemistry ana...



Confocal immunofluorescent analysis of G...