

---

## Product Datasheet

### TGFBR2 Antibody (orb1269939)

**Description**

TGFBR2 Antibody

**Species/Host**

Rabbit

**Reactivity**

Human, Mouse

**Conjugation**

Unconjugated

**Tested Applications**

IF, IHC-P, WB

**Immunogen**

This TGFBR2 antibody is generated from rabbits immunized with a KLH conjugated synthetic peptide between 13-40 amino acids from the N-terminal region of human TGFBR2.

**Target**

TGFBR2

**Preservatives**

Supplied in PBS with 0.09% (W/V) sodium azide.

**Form/Appearance**

Liquid

**Concentration**

batch dependent

**Storage**

Store at 4°C for three months and -20°C, stable for up to one year. As with all antibodies care should be taken to avoid repeated freeze thaw cycles. Antibodies should not be exposed to prolonged high temperatures.

**Note**

For research use only

**Application notes**

For IHC-P starting dilution is: 1:25 For WB starting dilution is: 1:1000

**Isotype**

Rabbit Ig

**Clonality**

Polyclonal

**MW**

65 kDa

**Uniprot ID**

[P37173](#)

**NCBI**

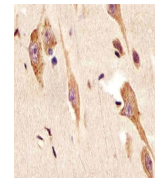
[P37173](#)

**Dilution Range**

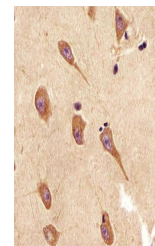
For IHC-P starting dilution is: 1:25 For WB starting dilution is: 1:1000

**Expiration Date**

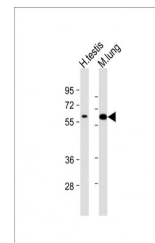
12 months from date of receipt.



Antibody staining TGFBR2 in human brain ...



Antibody staining TGFBR2 in human brain ...



Western Blot at 1:2000 dilution Lane 1: ...