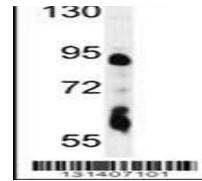
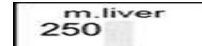
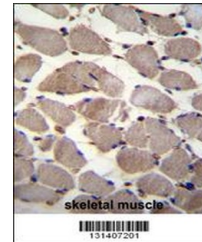

Product Datasheet

PIK3C2A Antibody (orb1269938)

Description	PIK3C2A Antibody
Species/Host	Rabbit
Reactivity	Mouse
Conjugation	Unconjugated
Tested Applications	IHC-P, WB
Immunogen	This PIK3C2A antibody is generated from rabbits immunized with a KLH conjugated synthetic peptide between 1431-1458 amino acids from the C-terminal region of human PIK3C2A.
Target	PIK3C2A
Preservatives	Supplied in PBS with 0.09% (W/V) sodium azide.
Form/Appearance	Liquid
Concentration	batch dependent
Storage	Store at 4°C for three months and -20°C, stable for up to one year. As with all antibodies care should be taken to avoid repeated freeze thaw cycles. Antibodies should not be exposed to prolonged high temperatures.
Note	For research use only
Application notes	For WB starting dilution is: 1:1000For IHC-P starting dilution is: 1:10~50
Isotype	Rabbit Ig
Clonality	Polyclonal
MW	191 kDa
Uniprot ID	O00443
NCBI	O00443
Dilution Range	For WB starting dilution is: 1:1000For IHC-P starting dilution is: 1:10~50
Expiration Date	12 months from date of receipt.



Western blot analysis in mouse liver tis...



PIK3C2A Antibody immunohistochemistry an...