
Product Datasheet

GHSR Antibody (orb1269931)

Description

GHSR Antibody

Species/Host

Rabbit

Reactivity

Human, Mouse

Conjugation

Unconjugated

Tested

IHC-P, WB

Applications
Immunogen

This GHSR antibody is generated from rabbits immunized with a KLH conjugated synthetic peptide between 326-357 amino acids from the C-terminal region of human GHSR.

Target

GHSR

Preservatives

Supplied in PBS with 0.09% (W/V) sodium azide.

Form/Appearance

Liquid

Concentration

batch dependent

Storage

Store at 4°C for three months and -20°C, stable for up to one year. As with all antibodies care should be taken to avoid repeated freeze thaw cycles. Antibodies should not be exposed to prolonged high temperatures.

Note

For research use only

Application notes

For IHC-P starting dilution is: 1:50~100For WB starting dilution is: 1:1000

Isotype

Rabbit Ig

Clonality

Polyclonal

MW

41 kDa

Uniprot ID
[Q92847](#)
NCBI
[Q92847](#)
Dilution Range

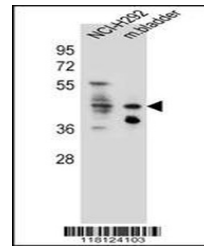
For IHC-P starting dilution is: 1:50~100For WB starting dilution is: 1:1000

Expiration Date

12 months from date of receipt.



GHSR Antibody immunohistochemistry analy...



Western blot analysis in NCI-H292 cell l...