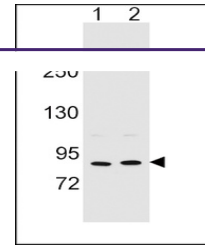
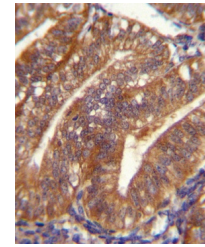

Product Datasheet

POSTN Antibody (orb1269876)

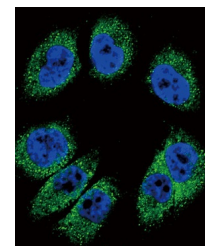
Description	POSTN Antibody
Species/Host	Rabbit
Reactivity	Human
Conjugation	Unconjugated
Tested Applications	IF, IHC-P, WB
Immunogen	This POSTN antibody is generated from rabbits immunized with a KLH conjugated synthetic peptide between 687-716 amino acids from the C-terminal region of human POSTN.
Target	POSTN
Preservatives	Supplied in PBS with 0.09% (W/V) sodium azide.
Form/Appearance	Liquid
Concentration	batch dependent
Storage	Store at 4°C for three months and -20°C, stable for up to one year. As with all antibodies care should be taken to avoid repeated freeze thaw cycles. Antibodies should not be exposed to prolonged high temperatures.
Note	For research use only
Application notes	For WB starting dilution is: 1:1000For IHC-P starting dilution is: 1:10~50For IF starting dilution is: 1:10~50
Isotype	Rabbit Ig
Clonality	Polyclonal
MW	93 kDa
Uniprot ID	Q15063
NCBI	Q15063
Dilution Range	For WB starting dilution is: 1:1000For IHC-P starting dilution is: 1:10~50For IF starting dilution is: 1:10~50
Expiration Date	12 months from date of receipt.



Western blot analysis in MCF-7 (lane 1),...



POSTN Antibody immunohistochemistry anal...



Confocal immunofluorescent analysis of P...