
Product Datasheet

TUBA1C Antibody (orb1269825)

Description

TUBA1C Antibody

Species/Host

Rabbit

Reactivity

Human, Mouse, Rat

Conjugation

Unconjugated

Tested Applications

IHC-P, WB

Immunogen

This TUBA1C antibody is generated from rabbits immunized with a KLH conjugated synthetic peptide between 414-441 amino acids from the C-terminal region of human TUBA1C.

Target

TUBA1C

Preservatives

Supplied in PBS with 0.09% (W/V) sodium azide.

Form/Appearance

Liquid

Concentration

batch dependent

Storage

Store at 4°C for three months and -20°C, stable for up to one year. As with all antibodies care should be taken to avoid repeated freeze thaw cycles. Antibodies should not be exposed to prolonged high temperatures.

Note

For research use only

Application notes

For IHC-P starting dilution is: 1:25 For WB starting dilution is: 1:1000

Isotype

Rabbit Ig

Clonality

Polyclonal

MW

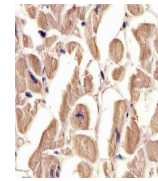
50 kDa

Uniprot ID
[Q9BQE3](#)
NCBI
[Q9BQE3](#)
Dilution Range

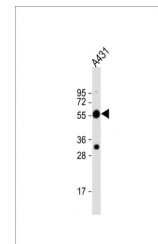
For IHC-P starting dilution is: 1:25 For WB starting dilution is: 1:1000

Expiration Date

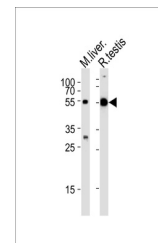
12 months from date of receipt.



Antibody staining TUBA1C in human heart ...



Western Blot at 1:2000 dilution + A431 w...



Western blot analysis of lysates from mo...