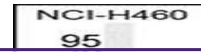
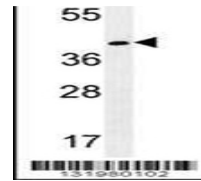
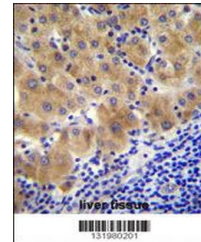

Product Datasheet

GGH Antibody (orb1269823)

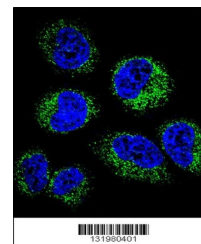
Description	GGH Antibody
Species/Host	Rabbit
Reactivity	Human
Conjugation	Unconjugated
Tested Applications	FC, IF, IHC-P, WB
Immunogen	This GGH antibody is generated from rabbits immunized with a KLH conjugated synthetic peptide between 229-256 amino acids from the C-terminal region of human GGH.
Target	GGH
Preservatives	Supplied in PBS with 0.09% (W/V) sodium azide.
Form/Appearance	Liquid
Concentration	batch dependent
Storage	Store at 4°C for three months and -20°C, stable for up to one year. As with all antibodies care should be taken to avoid repeated freeze thaw cycles. Antibodies should not be exposed to prolonged high temperatures.
Note	For research use only
Application notes	For WB starting dilution is: 1:1000For IHC-P starting dilution is: 1:10~50For IF starting dilution is: 1:10~50For FACS starting dilution is: 1:10~50
Isotype	Rabbit Ig
Clonality	Polyclonal
MW	36 kDa
Uniprot ID	Q92820
NCBI	Q92820
Dilution Range	For WB starting dilution is: 1:1000For IHC-P starting dilution is: 1:10~50For IF starting dilution is: 1:10~50For FACS starting dilution is: 1:10~50
Expiration Date	12 months from date of receipt.

Western blot analysis in NCI-H460 cell l...



GGH Antibody immunohistochemistry analys...



Confocal immunofluorescent analysis of G...