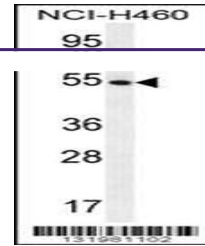
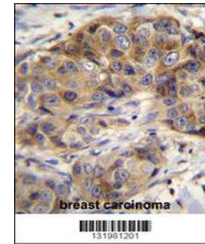

Product Datasheet

GSR Antibody (orb1269822)

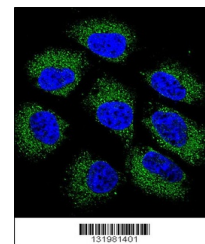
Description	GSR Antibody
Species/Host	Rabbit
Reactivity	Human
Conjugation	Unconjugated
Tested Applications	FC, IF, IHC-P, WB
Immunogen	This GSR antibody is generated from rabbits immunized with a KLH conjugated synthetic peptide between 380-408 amino acids from the C-terminal region of human GSR.
Target	GSR
Preservatives	Supplied in PBS with 0.09% (W/V) sodium azide.
Form/Appearance	Liquid
Concentration	batch dependent
Storage	Store at 4°C for three months and -20°C, stable for up to one year. As with all antibodies care should be taken to avoid repeated freeze thaw cycles. Antibodies should not be exposed to prolonged high temperatures.
Note	For research use only
Application notes	For WB starting dilution is: 1:1000For IHC-P starting dilution is: 1:10~50For IF starting dilution is: 1:10~50For FACS starting dilution is: 1:10~50
Isotype	Rabbit Ig
Clonality	Polyclonal
MW	56 kDa
Uniprot ID	P00390
NCBI	P00390
Dilution Range	For WB starting dilution is: 1:1000For IHC-P starting dilution is: 1:10~50For IF starting dilution is: 1:10~50For FACS starting dilution is: 1:10~50
Expiration Date	12 months from date of receipt.



Western blot analysis in NCI-H460 cell l...



GSR Antibody immunohistochemistry analys...



Confocal immunofluorescent analysis of G...