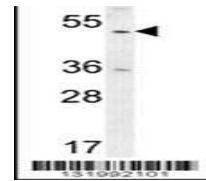
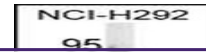
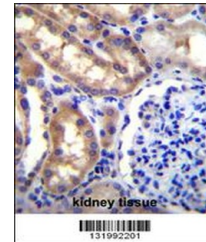

Product Datasheet

SH2D4A Antibody (orb1269820)

Description	SH2D4A Antibody
Species/Host	Rabbit
Reactivity	Human
Conjugation	Unconjugated
Tested Applications	IHC-P, WB
Immunogen	This SH2D4A antibody is generated from rabbits immunized with a KLH conjugated synthetic peptide between 38-67 amino acids from the N-terminal region of human SH2D4A.
Target	SH2D4A
Preservatives	Supplied in PBS with 0.09% (W/V) sodium azide.
Form/Appearance	Liquid
Concentration	batch dependent
Storage	Store at 4°C for three months and -20°C, stable for up to one year. As with all antibodies care should be taken to avoid repeated freeze thaw cycles. Antibodies should not be exposed to prolonged high temperatures.
Note	For research use only
Application notes	For WB starting dilution is: 1:1000For IHC-P starting dilution is: 1:10~50
Isotype	Rabbit Ig
Clonality	Polyclonal
MW	53 kDa
Uniprot ID	Q9H788
NCBI	Q9H788
Dilution Range	For WB starting dilution is: 1:1000For IHC-P starting dilution is: 1:10~50
Expiration Date	12 months from date of receipt.



Western blot analysis in NCI-H292 cell l...



SH2D4A Antibody immunohistochemistry ana...