
Product Datasheet

VILL Antibody (orb1269801)

Description

VILL Antibody

Species/Host

Rabbit

Reactivity

Human

Conjugation

Unconjugated

Tested

FC, IF, IHC-P, WB

Applications
Immunogen

This VILL antibody is generated from rabbits immunized with a KLH conjugated synthetic peptide between 385-412 amino acids from the Central region of human VILL.

Target

VILL

Preservatives

Supplied in PBS with 0.09% (W/V) sodium azide.

Form/Appearance

Liquid

Concentration

batch dependent

Storage

Store at 4°C for three months and -20°C, stable for up to one year. As with all antibodies care should be taken to avoid repeated freeze thaw cycles. Antibodies should not be exposed to prolonged high temperatures.

Note

For research use only

Application notes

For WB starting dilution is: 1:1000
For IHC-P starting dilution is: 1:50~100
For IF starting dilution is: 1:10~50
For FACS starting dilution is: 1:10~50

Isotype

Rabbit Ig

Clonality

Polyclonal

MW

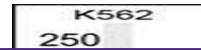
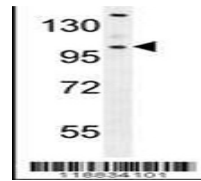
96 kDa

Uniprot ID
[O15195](#)
NCBI
[O15195](#)
Dilution Range

For WB starting dilution is: 1:1000
For IHC-P starting dilution is: 1:50~100
For IF starting dilution is: 1:10~50
For FACS starting dilution is: 1:10~50

Expiration Date

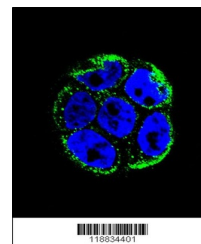
12 months from date of receipt.

Western blot analysis in K562 cell line ...



VILL Antibody immunohistochemistry analy...



Confocal immunofluorescent analysis of V...