
Product Datasheet

KAT2A Antibody (orb1269749)

Description

KAT2A Antibody


 250

Species/Host

Rabbit

Reactivity

Human, Mouse

Conjugation

Unconjugated

Tested Applications

FC, WB

Immunogen

This hGCN5 antibody is generated from rabbits immunized with a KLH conjugated synthetic peptide between 807-837 amino acids from the C-terminal region of human hGCN5.

Western blot analysis in mouse Neuro-2a ...

Target

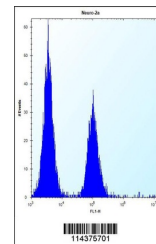
KAT2A

Preservatives

Supplied in PBS with 0.09% (W/V) sodium azide.

Form/Appearance

Liquid



Flow cytometric analysis of Neuro-2a cel...

Concentration

batch dependent

Storage

Store at 4°C for three months and -20°C, stable for up to one year. As with all antibodies care should be taken to avoid repeated freeze thaw cycles. Antibodies should not be exposed to prolonged high temperatures.

Note

For research use only

Application notes

For WB starting dilution is: 1:1000 For FACS starting dilution is: 1:10~50

Isotype

Rabbit Ig

Clonality

Polyclonal

MW

94 kDa

Uniprot ID
[Q92830](#)
NCBI
[Q92830](#)
Dilution Range

For WB starting dilution is: 1:1000 For FACS starting dilution is: 1:10~50

Expiration Date

12 months from date of receipt.