
Product Datasheet

RBL2 Antibody (orb1269737)

Description

RBL2 Antibody

Species/Host

Rabbit

Reactivity

Human

Conjugation

Unconjugated

Tested Applications

FC, WB

Immunogen

This RBL2 antibody is generated from rabbits immunized with a KLH conjugated synthetic peptide between 165-194 amino acids from the N-terminal region of human RBL2.

Target

RBL2

Preservatives

Supplied in PBS with 0.09% (W/V) sodium azide.

Form/Appearance

Liquid

Concentration

batch dependent

Storage

Store at 4°C for three months and -20°C, stable for up to one year. As with all antibodies care should be taken to avoid repeated freeze thaw cycles. Antibodies should not be exposed to prolonged high temperatures.

Note

For research use only

Application notes

For WB starting dilution is: 1:2000 For FACS starting dilution is: 1:10~50

Isotype

Rabbit Ig

Clonality

Polyclonal

MW

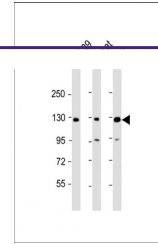
128 kDa

Uniprot ID
[Q08999](#)
NCBI
[Q08999](#)
Dilution Range

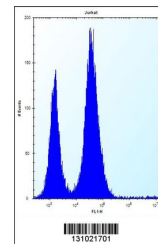
For WB starting dilution is: 1:2000 For FACS starting dilution is: 1:10~50

Expiration Date

12 months from date of receipt.



Western Blot at 1:2000 dilution Lane 1: ...



Flow cytometric analysis of Jurkat cells...