

---

## Product Datasheet

### FSD2 Antibody (orb1269704)

**Description**

FSD2 Antibody

**Species/Host**

Rabbit

**Reactivity**

Human

**Conjugation**

Unconjugated

**Tested**

IHC-P, WB

**Applications**
**Immunogen**

This FSD2 antibody is generated from rabbits immunized with a KLH conjugated synthetic peptide between 61-89 amino acids from the N-terminal region of human FSD2.

**Target**

FSD2

**Preservatives**

Supplied in PBS with 0.09% (W/V) sodium azide.

**Form/Appearance**

Liquid

**Concentration**

batch dependent

**Storage**

Store at 4°C for three months and -20°C, stable for up to one year. As with all antibodies care should be taken to avoid repeated freeze thaw cycles. Antibodies should not be exposed to prolonged high temperatures.

**Note**

For research use only

**Application notes**

For WB starting dilution is: 1:1000 For IHC-P starting dilution is: 1:10~50

**Isotype**

Rabbit Ig

**Clonality**

Polyclonal

**MW**

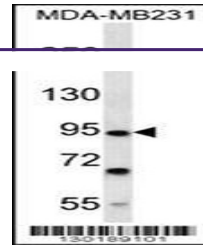
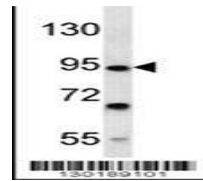
85 kDa

**Uniprot ID**
[A1L4K1](#)
**NCBI**
[A1L4K1](#)
**Dilution Range**

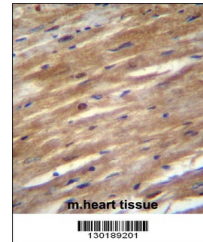
For WB starting dilution is: 1:1000 For IHC-P starting dilution is: 1:10~50

**Expiration Date**

12 months from date of receipt.

Western blot analysis  
in MDA-MB231 cell ...



FSD2 Antibody  
immunohistochemistry  
analy...