
Product Datasheet

DVL1 Antibody (orb1269676)

Description

DVL1 Antibody

Species/Host

Rabbit

Reactivity

Human, Mouse

Conjugation

Unconjugated

Tested Applications

IF, IHC-P, WB

Immunogen

This DVL1 antibody is generated from rabbits immunized with a KLH conjugated synthetic peptide between 442-470 amino acids from the Central region of human DVL1.

Target

DVL1

Preservatives

Supplied in PBS with 0.09% (W/V) sodium azide.

Form/Appearance

Liquid

Concentration

batch dependent

Storage

Store at 4°C for three months and -20°C, stable for up to one year. As with all antibodies care should be taken to avoid repeated freeze thaw cycles. Antibodies should not be exposed to prolonged high temperatures.

Note

For research use only

Application notes

For IF starting dilution is: 1:25
For IHC-P starting dilution is: 1:25
For WB starting dilution is: 1:1000

Isotype

Rabbit Ig

Clonality

Polyclonal

MW

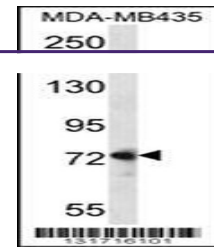
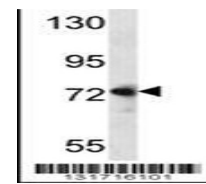
75 kDa

Uniprot ID
[O14640](#)
NCBI
[O14640](#)
Dilution Range

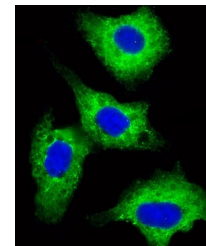
For IF starting dilution is: 1:25
For IHC-P starting dilution is: 1:25
For WB starting dilution is: 1:1000

Expiration Date

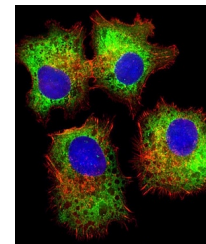
12 months from date of receipt.

Western blot analysis in MDA-MB435 cell ...



Immunofluorescent analysis of 4% parafor...



Immunofluorescent analysis of 4% parafor...