

Product Datasheet

PCCA Antibody (orb1269674)

Description

PCCA Antibody

Species/Host

Rabbit

Reactivity

Human, Rat

Conjugation

Unconjugated

Tested

IHC-P, WB

Applications
Immunogen

This PCCA antibody is generated from rabbits immunized with a KLH conjugated synthetic peptide between 362-390 amino acids from the Central region of human PCCA.

Target

PCCA

Preservatives

Supplied in PBS with 0.09% (W/V) sodium azide.

Form/Appearance

Liquid

Concentration

batch dependent

Storage

Store at 4°C for three months and -20°C, stable for up to one year. As with all antibodies care should be taken to avoid repeated freeze thaw cycles. Antibodies should not be exposed to prolonged high temperatures.

Note

For research use only

Application notes

For IHC-P starting dilution is: 1:25 For WB starting dilution is: 1:2000

Isotype

Rabbit Ig

Clonality

Polyclonal

MW

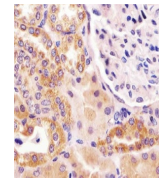
80 kDa

Uniprot ID
[P05165](#)
NCBI
[P05165](#)
Dilution Range

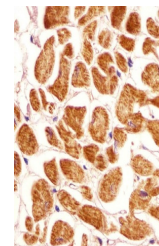
For IHC-P starting dilution is: 1:25 For WB starting dilution is: 1:2000

Expiration Date

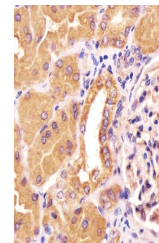
12 months from date of receipt.



Antibody staining PCCA in human kidney t...



Antibody staining PCCA in human heart ti...



Antibody staining PCCA in human kidney t...