
Product Datasheet

IDO2 Antibody (orb1269620)

Description

IDO2 Antibody

Species/Host

Rabbit

Reactivity

Human

Conjugation

Unconjugated

Tested

IHC-P, WB

Applications
Immunogen

This I23O2 antibody is generated from rabbits immunized with a KLH conjugated synthetic peptide between 267-295 amino acids from the C-terminal region of human I23O2.

Target

IDO2

Preservatives

Supplied in PBS with 0.09% (W/V) sodium azide.

Form/Appearance

Liquid

Concentration

batch dependent

Storage

Store at 4°C for three months and -20°C, stable for up to one year. As with all antibodies care should be taken to avoid repeated freeze thaw cycles. Antibodies should not be exposed to prolonged high temperatures.

Note

For research use only

Application notes

For IHC-P starting dilution is: 1:25 For WB starting dilution is: 1:2000

Isotype

Rabbit Ig

Clonality

Polyclonal

MW

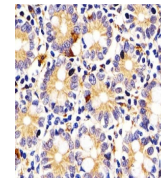
45 kDa

Uniprot ID
[Q6ZQW0](#)
NCBI
[Q6ZQW0](#)
Dilution Range

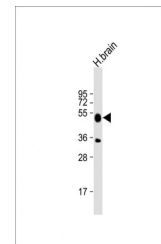
For IHC-P starting dilution is: 1:25 For WB starting dilution is: 1:2000

Expiration Date

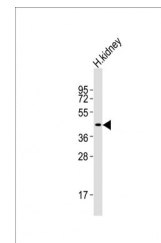
12 months from date of receipt.



Antibody staining I23O2 in Human small i...



Western Blot at 1:4000 dilution + human ...



Western Blot at 1:2000 dilution + human ...