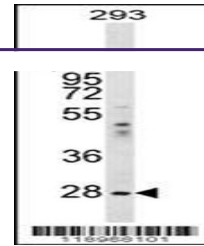


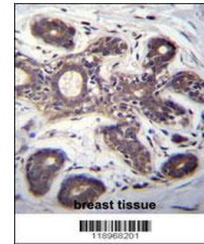
## Product Datasheet

### EIF2B1 Antibody (orb1269616)

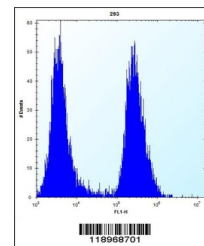
|                            |                                                                                                                                                                                                                        |
|----------------------------|------------------------------------------------------------------------------------------------------------------------------------------------------------------------------------------------------------------------|
| <b>Description</b>         | EIF2B1 Antibody                                                                                                                                                                                                        |
| <b>Species/Host</b>        | Rabbit                                                                                                                                                                                                                 |
| <b>Reactivity</b>          | Human                                                                                                                                                                                                                  |
| <b>Conjugation</b>         | Unconjugated                                                                                                                                                                                                           |
| <b>Tested Applications</b> | FC, IHC-P, WB                                                                                                                                                                                                          |
| <b>Immunogen</b>           | This EIF2B1 antibody is generated from rabbits immunized with a KLH conjugated synthetic peptide between 136-163 amino acids from the Central region of human EIF2B1.                                                  |
| <b>Target</b>              | EIF2B1                                                                                                                                                                                                                 |
| <b>Preservatives</b>       | Supplied in PBS with 0.09% (W/V) sodium azide.                                                                                                                                                                         |
| <b>Form/Appearance</b>     | Liquid                                                                                                                                                                                                                 |
| <b>Concentration</b>       | batch dependent                                                                                                                                                                                                        |
| <b>Storage</b>             | Store at 4°C for three months and -20°C, stable for up to one year. As with all antibodies care should be taken to avoid repeated freeze thaw cycles. Antibodies should not be exposed to prolonged high temperatures. |
| <b>Note</b>                | For research use only                                                                                                                                                                                                  |
| <b>Application notes</b>   | For WB starting dilution is: 1:1000For IHC-P starting dilution is: 1:10~50For FACS starting dilution is: 1:10~50                                                                                                       |
| <b>Isotype</b>             | Rabbit Ig                                                                                                                                                                                                              |
| <b>Clonality</b>           | Polyclonal                                                                                                                                                                                                             |
| <b>MW</b>                  | 34 kDa                                                                                                                                                                                                                 |
| <b>Uniprot ID</b>          | <a href="#">Q14232</a>                                                                                                                                                                                                 |
| <b>NCBI</b>                | <a href="#">Q14232</a>                                                                                                                                                                                                 |
| <b>Dilution Range</b>      | For WB starting dilution is: 1:1000For IHC-P starting dilution is: 1:10~50For FACS starting dilution is: 1:10~50                                                                                                       |
| <b>Expiration Date</b>     | 12 months from date of receipt.                                                                                                                                                                                        |



Western blot analysis in 293 cell line I...



EIF2B1 Antibody immunohistochemistry ana...



Flow cytometric analysis of 293 cells (r...