
Product Datasheet

TCF7L2 Antibody (orb1269615)

Description

TCF7L2 Antibody

Species/Host

Rabbit

Reactivity

Human, Mouse

Conjugation

Unconjugated

Tested

WB

Applications
Immunogen

This TCF7L2 antibody is generated from rabbits immunized with a KLH conjugated synthetic peptide between 61-90 amino acids from the N-terminal region of human TCF7L2.

Target

TCF7L2

Preservatives

Supplied in PBS with 0.09% (W/V) sodium azide.

Form/Appearance

Liquid

Concentration

batch dependent

Storage

Store at 4°C for three months and -20°C, stable for up to one year. As with all antibodies care should be taken to avoid repeated freeze thaw cycles. Antibodies should not be exposed to prolonged high temperatures.

Note

For research use only

Application notes

For WB starting dilution is: 1:2000

Isotype

Rabbit Ig

Clonality

Polyclonal

MW

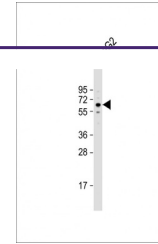
68 kDa

Uniprot ID
[Q9NQB0](#)
NCBI
[Q9NQB0](#)
Dilution Range

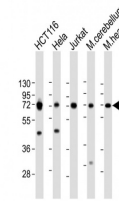
For WB starting dilution is: 1:2000

Expiration Date

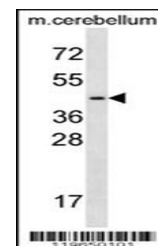
12 months from date of receipt.



Western Blot at 1:2000 dilution + HepG2 ...



Western Blot at 1:2000 dilution Lane 1: ...



Western blot analysis in mouse cerebellu...