

---

## Product Datasheet

### MYBPC3 Antibody (orb1269601)

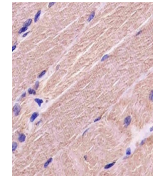
**Description**

MYBPC3 Antibody



**Species/Host**

Rabbit



**Reactivity**

Human, Mouse, Rat

**Conjugation**

Unconjugated

**Tested Applications**

IHC-P, WB

Antibody staining MYBPC3 in human skelet...

**Immunogen**

This MYBPC3 antibody is generated from rabbits immunized with a KLH conjugated synthetic peptide between 189-218 amino acids from the N-terminal region of human MYBPC3.

**Target**

MYBPC3

**Preservatives**

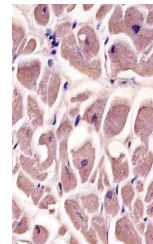
Supplied in PBS with 0.09% (W/V) sodium azide.

**Form/Appearance**

Liquid

**Concentration**

batch dependent



**Storage**

Store at 4°C for three months and -20°C, stable for up to one year. As with all antibodies care should be taken to avoid repeated freeze thaw cycles. Antibodies should not be exposed to prolonged high temperatures.

Antibody staining MYBPC3 in human heart

**Note**

For research use only

**Application notes**

For IHC-P starting dilution is: 1:25 For WB starting dilution is: 1:1000

**Isotype**

Rabbit IgG

**Clonality**

Polyclonal

**MW**

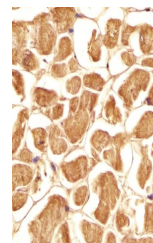
141 kDa

**Uniprot ID**

[Q14896](#)

**NCBI**

[Q14896](#)



Antibody staining MYBPC3 in human heart

**Dilution Range**

For IHC-P starting dilution is: 1:25 For WB starting dilution is: 1:1000

**Expiration Date**

12 months from date of receipt.