

Product Datasheet

MDM2 Antibody (orb1269534)

Description

MDM2 Antibody

Species/Host

Rabbit

Reactivity

Human

Conjugation

Unconjugated

Tested Applications

FC, IF, IHC-P, WB

Immunogen

This MDM2 antibody is generated from rabbits immunized with a KLH conjugated synthetic peptide between 141-176 amino acids from human MDM2.

Target

MDM2

Preservatives

Supplied in PBS with 0.09% (W/V) sodium azide.

Form/Appearance

Liquid

Concentration

batch dependent

Storage

Store at 4°C for three months and -20°C, stable for up to one year. As with all antibodies care should be taken to avoid repeated freeze thaw cycles. Antibodies should not be exposed to prolonged high temperatures.

Note

For research use only

Application notes

For FACS starting dilution is: 1:25
For WB starting dilution is: 1:2000
For IHC-P starting dilution is: 1:10~50
For IF starting dilution is: 1:10~50

Isotype

Rabbit Ig

Clonality

Polyclonal

MW

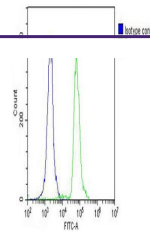
55 kDa

Uniprot ID
[Q00987](#)
NCBI
[Q00987](#)
Dilution Range

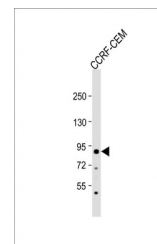
For FACS starting dilution is: 1:25
For WB starting dilution is: 1:2000
For IHC-P starting dilution is: 1:10~50
For IF starting dilution is: 1:10~50

Expiration Date

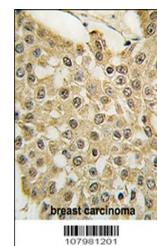
12 months from date of receipt.



Overlay histogram showing THP-1 cells st...



Western Blot at 1:2000 dilution + CCRF-C...



Formalin-fixed and paraffin-embedded hum...