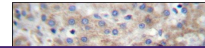

Product Datasheet

FGFRL1 Antibody (orb1269422)

Description

FGFR1 Antibody


Species/Host

Rabbit

Reactivity

Human

Conjugation

Unconjugated

Tested Applications

IHC-P, WB

Immunogen

This FGFR1 antibody is generated from rabbits immunized with a KLH conjugated synthetic peptide between 131-160 amino acids from the N-terminal region of human FGFR1.

Target

FGFR1

Preservatives

Supplied in PBS with 0.09% (W/V) sodium azide.

Form/Appearance

Liquid

Concentration

batch dependent

Storage

Store at 4°C for three months and -20°C, stable for up to one year. As with all antibodies care should be taken to avoid repeated freeze thaw cycles. Antibodies should not be exposed to prolonged high temperatures.

Note

For research use only

Application notes

For IHC-P starting dilution is: 1:10~50
For WB starting dilution is: 1:1000

Isotype

Rabbit Ig

Clonality

Polyclonal

MW

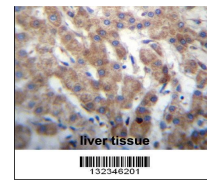
55 kDa

Uniprot ID
[Q8N441](#)
NCBI
[Q8N441](#)
Dilution Range

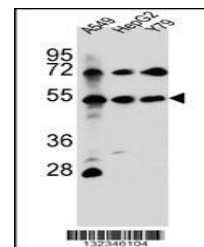
For IHC-P starting dilution is: 1:10~50
For WB starting dilution is: 1:1000

Expiration Date

12 months from date of receipt.



FGFR1 Antibody immunohistochemistry ana...



Western blot analysis in A549, HepG2, Y7...