
Product Datasheet

LIN7C Antibody (orb1269370)

Description

LIN7C Antibody

Species/Host

Rabbit

Reactivity

Human

Conjugation

Unconjugated

Tested Applications

IHC-P, WB

Immunogen

This LIN7C antibody is generated from rabbits immunized with a KLH conjugated synthetic peptide between 168-197 amino acids from the C-terminal region of human LIN7C.

Target

LIN7C

Preservatives

Supplied in PBS with 0.09% (W/V) sodium azide.

Form/Appearance

Liquid

Concentration

batch dependent

Storage

Store at 4°C for three months and -20°C, stable for up to one year. As with all antibodies care should be taken to avoid repeated freeze thaw cycles. Antibodies should not be exposed to prolonged high temperatures.

Note

For research use only

Application notes

For IHC-P starting dilution is: 1:10~50
For WB starting dilution is: 1:1000

Isotype

Rabbit Ig

Clonality

Polyclonal

MW

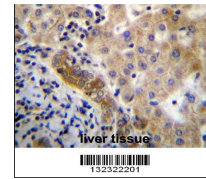
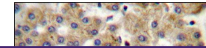
22 kDa

Uniprot ID
[Q9NUP9](#)
NCBI
[Q9NUP9](#)
Dilution Range

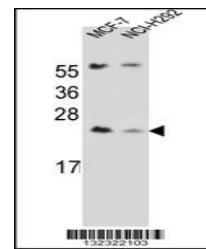
For IHC-P starting dilution is: 1:10~50
For WB starting dilution is: 1:1000

Expiration Date

12 months from date of receipt.



LIN7C Antibdy immunohistochemistry analy...



Western blot analysis in MCF-7, NCI-H292...