
Product Datasheet

SUV39H2 Antibody (orb1269360)

Description

SUV39H2 Antibody

Species/Host

Rabbit

Reactivity

Human, Mouse

Conjugation

Unconjugated

Tested Applications

IHC-P, WB

Immunogen

This SUV39H2 antibody is generated from rabbits immunized with a KLH conjugated synthetic peptide between 93-122 amino acids from the N-terminal region of human SUV39H2.

Target

SUV39H2

Preservatives

Supplied in PBS with 0.09% (W/V) sodium azide.

Form/Appearance

Liquid

Concentration

batch dependent

Storage

Store at 4°C for three months and -20°C, stable for up to one year. As with all antibodies care should be taken to avoid repeated freeze thaw cycles. Antibodies should not be exposed to prolonged high temperatures.

Note

For research use only

Application notes

For WB starting dilution is: 1:1000 For IHC-P starting dilution is: 1:50~100

Isotype

Rabbit Ig

Clonality

Polyclonal

MW

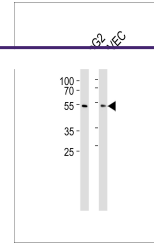
47 kDa

Uniprot ID
[Q9H511](#)
NCBI
[Q9H511](#)
Dilution Range

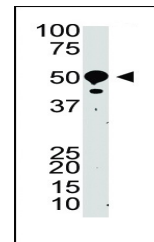
For WB starting dilution is: 1:1000 For IHC-P starting dilution is: 1:50~100

Expiration Date

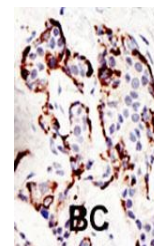
12 months from date of receipt.



Western blot analysis of lysates from He...



Antibody is used in Western blot to dete...



Formalin-fixed and paraffin-embedded hum...