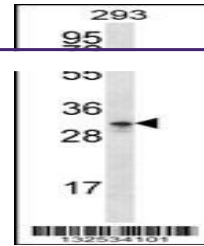


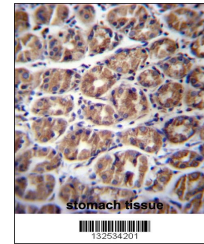
Product Datasheet

GPM6A Antibody (orb1269352)

Description	GPM6A Antibody
Species/Host	Rabbit
Reactivity	Human
Conjugation	Unconjugated
Tested Applications	IHC-P, WB
Immunogen	This GPM6A antibody is generated from rabbits immunized with a KLH conjugated synthetic peptide between 246-275 amino acids from the C-terminal region of human GPM6A.
Target	GPM6A
Preservatives	Supplied in PBS with 0.09% (W/V) sodium azide.
Form/Appearance	Liquid
Concentration	batch dependent
Storage	Store at 4°C for three months and -20°C, stable for up to one year. As with all antibodies care should be taken to avoid repeated freeze thaw cycles. Antibodies should not be exposed to prolonged high temperatures.
Note	For research use only
Application notes	For WB starting dilution is: 1:1000 For IHC-P starting dilution is: 1:10~50
Isotype	Rabbit Ig
Clonality	Polyclonal
MW	31 kDa
Uniprot ID	P51674
NCBI	P51674
Dilution Range	For WB starting dilution is: 1:1000 For IHC-P starting dilution is: 1:10~50
Expiration Date	12 months from date of receipt.



Western blot analysis in 293 cell line l...



GPM6A Antibody immunohistochemistry anal...