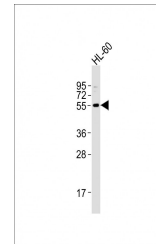


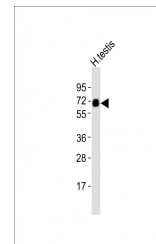
Product Datasheet

ZFP91 Antibody (orb1269319)

Description	ZFP91 Antibody
Species/Host	Rabbit
Reactivity	Human, Mouse
Conjugation	Unconjugated
Tested Applications	WB
Immunogen	This ZFP91 antibody is generated from rabbits immunized with a KLH conjugated synthetic peptide between 216-245 amino acids from the Central region of human ZFP91.
Target	ZFP91
Preservatives	Supplied in PBS with 0.09% (W/V) sodium azide.
Form/Appearance	Liquid
Concentration	batch dependent
Storage	Store at 4°C for three months and -20°C, stable for up to one year. As with all antibodies care should be taken to avoid repeated freeze thaw cycles. Antibodies should not be exposed to prolonged high temperatures.
Note	For research use only
Application notes	For WB starting dilution is: 1:2000
Isotype	Rabbit Ig
Clonality	Polyclonal
MW	63 kDa
Uniprot ID	Q96JP5
NCBI	Q96JP5
Dilution Range	For WB starting dilution is: 1:2000
Expiration Date	12 months from date of receipt.



Western Blot at 1:2000 dilution + HL-60 ...



Western Blot at 1:2000 dilution + human ...