

---

## Product Datasheet

### MPP3 Antibody (orb1269200)

**Description**

MPP3 Antibody

**Species/Host**

Rabbit

**Reactivity**

Human

**Conjugation**

Unconjugated

**Tested Applications**

FC, IF, WB

**Immunogen**

This MPP3 antibody is generated from rabbits immunized with a KLH conjugated synthetic peptide between 406-434 amino acids from the C-terminal region of human MPP3.

**Target**

MPP3

**Preservatives**

Supplied in PBS with 0.09% (W/V) sodium azide.

**Form/Appearance**

Liquid

**Concentration**

batch dependent

**Storage**

Store at 4°C for three months and -20°C, stable for up to one year. As with all antibodies care should be taken to avoid repeated freeze thaw cycles. Antibodies should not be exposed to prolonged high temperatures.

**Note**

For research use only

**Application notes**

For WB starting dilution is: 1:1000 For IF starting dilution is: 1:10~50 For FACS starting dilution is: 1:10~50

**Isotype**

Rabbit Ig

**Clonality**

Polyclonal

**MW**

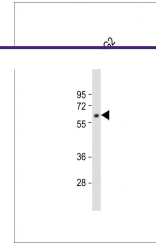
66 kDa

**Uniprot ID**
[Q13368](#)
**NCBI**
[Q13368](#)
**Dilution Range**

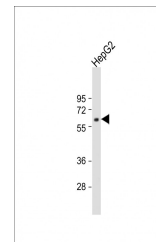
For WB starting dilution is: 1:1000 For IF starting dilution is: 1:10~50 For FACS starting dilution is: 1:10~50

**Expiration Date**

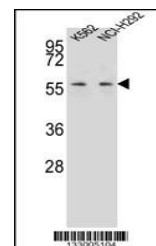
12 months from date of receipt.



Western Blot at 1:1000 dilution + HepG2 ...



Western Blot at 1:1000 dilution + HepG2 ...



Western blot analysis in K562, NCI-H292 ...