

---

## Product Datasheet

### NETO2 Antibody (orb1269043)

**Description**

NETO2 Antibody

**Species/Host**

Rabbit

**Reactivity**

Human

**Conjugation**

Unconjugated

**Tested Applications**

FC, IHC-P, WB

**Immunogen**

This NETO2 antibody is generated from rabbits immunized with a KLH conjugated synthetic peptide between 174-203 amino acids from the N-terminal region of human NETO2.

**Target**

NETO2

**Preservatives**

Supplied in PBS with 0.09% (W/V) sodium azide.

**Form/Appearance**

Liquid

**Concentration**

batch dependent

**Storage**

Store at 4°C for three months and -20°C, stable for up to one year. As with all antibodies care should be taken to avoid repeated freeze thaw cycles. Antibodies should not be exposed to prolonged high temperatures.

**Note**

For research use only

**Application notes**

For FACS starting dilution is: 1:25  
For WB starting dilution is: 1:2000  
For IHC-P starting dilution is: 1:10~50

**Isotype**

Rabbit Ig

**Clonality**

Polyclonal

**MW**

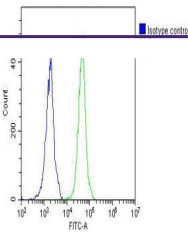
59 kDa

**Uniprot ID**
[Q8NC67](#)
**NCBI**
[Q8NC67](#)
**Dilution Range**

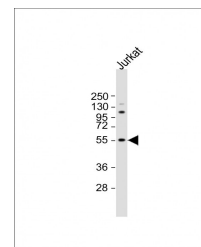
For FACS starting dilution is: 1:25  
For WB starting dilution is: 1:2000  
For IHC-P starting dilution is: 1:10~50

**Expiration Date**

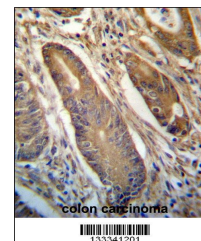
12 months from date of receipt.



Overlay histogram showing Jurkat cells S...



Western Blot at 1:2000 dilution + Jurkat...



NETO2 Antibody (N-term) immunohistochemi...