

---

## Product Datasheet

### SDF2L1 Antibody (orb1268965)

**Description**

SDF2L1 Antibody

**Species/Host**

Rabbit

**Reactivity**

Human, Mouse

**Conjugation**

Unconjugated

**Tested**

FC, IHC-P, WB

**Applications**
**Immunogen**

This SDF2L1 antibody is generated from rabbits immunized with a KLH conjugated synthetic peptide between 160-189 amino acids from the C-terminal region of human SDF2L1.

**Target**

SDF2L1

**Preservatives**

Supplied in PBS with 0.09% (W/V) sodium azide.

**Form/Appearance**

Liquid

**Concentration**

batch dependent

**Storage**

Store at 4°C for three months and -20°C, stable for up to one year. As with all antibodies care should be taken to avoid repeated freeze thaw cycles. Antibodies should not be exposed to prolonged high temperatures.

**Note**

For research use only

**Application notes**

For WB starting dilution is: 1:1000  
For IHC-P starting dilution is: 1:10~50  
For FACS starting dilution is: 1:10~50

**Isotype**

Rabbit Ig

**Clonality**

Polyclonal

**MW**

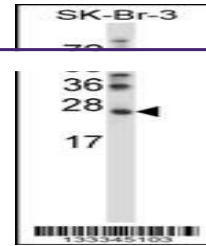
24 kDa

**Uniprot ID**
[Q9HCN8](#)
**NCBI**
[Q9HCN8](#)
**Dilution Range**

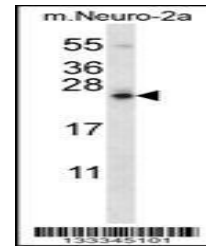
For WB starting dilution is: 1:1000  
For IHC-P starting dilution is: 1:10~50  
For FACS starting dilution is: 1:10~50

**Expiration Date**

12 months from date of receipt.



Western blot analysis in SK-BR-3 cell li...



Western blot analysis in mouse Neuro-2a ...



SDF2L1 Antibody immunohistochemistry ana...