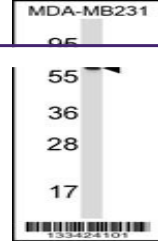


## Product Datasheet

### **BTN3A1 Antibody (orb1268953)**

**Description**

BTN3A1 Antibody


**Species/Host**

Rabbit

**Reactivity**

Human

**Conjugation**

Unconjugated

**Tested**

WB

**Applications**

Western blot analysis in MDA-MB231 cell ...

**Immunogen**

This BTN3A1 antibody is generated from rabbits immunized with a KLH conjugated synthetic peptide between 345-374 amino acids from the C-terminal region of human BTN3A1.

**Target**

BTN3A1

**Preservatives**

Supplied in PBS with 0.09% (W/V) sodium azide.

**Form/Appearance**

Liquid

**Concentration**

batch dependent

**Storage**

Store at 4°C for three months and -20°C, stable for up to one year. As with all antibodies care should be taken to avoid repeated freeze thaw cycles. Antibodies should not be exposed to prolonged high temperatures.

**Note**

For research use only

**Application notes**

For WB starting dilution is: 1:1000

**Isotype**

Rabbit Ig

**Clonality**

Polyclonal

**MW**

58 kDa

**Uniprot ID**
[O00481](#)
**NCBI**
[O00481](#)
**Dilution Range**

For WB starting dilution is: 1:1000

**Expiration Date**

12 months from date of receipt.