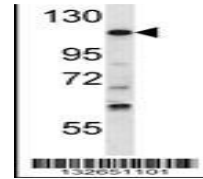
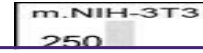
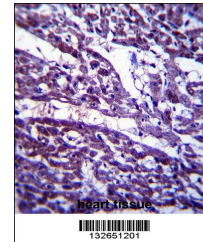

Product Datasheet

TUBGCP5 Antibody (orb1268901)

Description	TUBGCP5 Antibody
Species/Host	Rabbit
Reactivity	Mouse
Conjugation	Unconjugated
Tested Applications	IHC-P, WB
Immunogen	This TUBGCP5 antibody is generated from rabbits immunized with a KLH conjugated synthetic peptide between 172-201 amino acids from the N-terminal region of human TUBGCP5.
Target	TUBGCP5
Preservatives	Supplied in PBS with 0.09% (W/V) sodium azide.
Form/Appearance	Liquid
Concentration	batch dependent
Storage	Store at 4°C for three months and -20°C, stable for up to one year. As with all antibodies care should be taken to avoid repeated freeze thaw cycles. Antibodies should not be exposed to prolonged high temperatures.
Note	For research use only
Application notes	For WB starting dilution is: 1:1000 For IHC-P starting dilution is: 1:10~50
Isotype	Rabbit Ig
Clonality	Polyclonal
MW	118 kDa
Uniprot ID	Q96RT8
NCBI	Q96RT8
Dilution Range	For WB starting dilution is: 1:1000 For IHC-P starting dilution is: 1:10~50
Expiration Date	12 months from date of receipt.



Western blot analysis in mouse NIH-3T3 c...



TUBGCP5 Antibody immunohistochemistry an...