

Product Datasheet

VKORC1L1 Antibody (orb1268844)

Description

VKORC1L1 Antibody

Species/Host

Rabbit

Reactivity

Human, Mouse, Rat

Conjugation

Unconjugated

Tested Applications

WB

Applications
Immunogen

This VKORC1L1 antibody is generated from rabbits immunized with a KLH conjugated synthetic peptide between 19-47 amino acids from the N-terminal region of human VKORC1L1.

Target

VKORC1L1

Preservatives

Supplied in PBS with 0.09% (W/V) sodium azide.

Form/Appearance

Liquid

Concentration

batch dependent

Storage

Store at 4°C for three months and -20°C, stable for up to one year. As with all antibodies care should be taken to avoid repeated freeze thaw cycles. Antibodies should not be exposed to prolonged high temperatures.

Note

For research use only

Application notes

For WB starting dilution is: 1:2000

Isotype

Rabbit Ig

Clonality

Polyclonal

MW

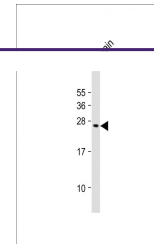
20 kDa

Uniprot ID
[Q8N0U8](#)
NCBI
[Q8N0U8](#)
Dilution Range

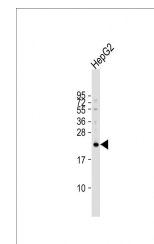
For WB starting dilution is: 1:2000

Expiration Date

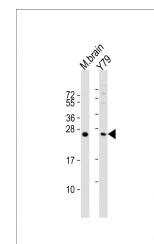
12 months from date of receipt.



Western Blot at 1:2000 dilution + rat br...



Western Blot at 1:2000 dilution + human ...



Western Blot at 1:1000-1:2000 dilution L...