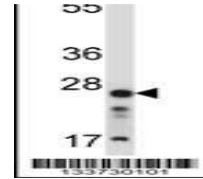
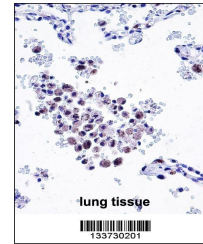

Product Datasheet

ARHGDIB Antibody (orb1268796)

Description	ARHGDIB Antibody
Species/Host	Rabbit
Reactivity	Human
Conjugation	Unconjugated
Tested Applications	IHC-P, WB
Immunogen	This ARHGDIB antibody is generated from rabbits immunized with a KLH conjugated synthetic peptide between 160-188 amino acids from the C-terminal region of human ARHGDIB.
Target	ARHGDIB
Preservatives	Supplied in PBS with 0.09% (W/V) sodium azide.
Form/Appearance	Liquid
Concentration	batch dependent
Storage	Store at 4°C for three months and -20°C, stable for up to one year. As with all antibodies care should be taken to avoid repeated freeze thaw cycles. Antibodies should not be exposed to prolonged high temperatures.
Note	For research use only
Application notes	For WB starting dilution is: 1:1000For IHC-P starting dilution is: 1:10~50
Isotype	Rabbit Ig
Clonality	Polyclonal
MW	23 kDa
Uniprot ID	P52566
NCBI	P52566
Dilution Range	For WB starting dilution is: 1:1000For IHC-P starting dilution is: 1:10~50
Expiration Date	12 months from date of receipt.



Western blot analysis in Jurkat cell lin...



ARHGDIB Antibody immunohistochemistry an...