
Product Datasheet

SLC11A2 Antibody (orb1268755)

Description

SLC11A2 Antibody

Species/Host

Rabbit

Reactivity

Mouse, Rat

Conjugation

Unconjugated

Tested Applications

IF, WB

Immunogen

This SLC11A2 antibody is generated from rabbits immunized with a KLH conjugated synthetic peptide between 262-291 amino acids from the Central region of human SLC11A2.

Target

SLC11A2

Preservatives

Supplied in PBS with 0.09% (W/V) sodium azide.

Form/Appearance

Liquid

Concentration

batch dependent

Storage

Store at 4°C for three months and -20°C, stable for up to one year. As with all antibodies care should be taken to avoid repeated freeze thaw cycles. Antibodies should not be exposed to prolonged high temperatures.

Note

For research use only

Application notes

For WB starting dilution is: 1:2000 For IF starting dilution is: 1:10~50

Isotype

Rabbit Ig

Clonality

Polyclonal

MW

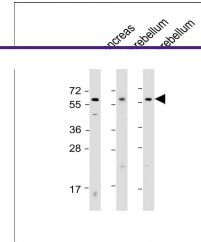
62 kDa

Uniprot ID
[P49281](#)
NCBI
[P49281](#)
Dilution Range

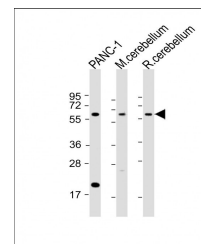
For WB starting dilution is: 1:2000 For IF starting dilution is: 1:10~50

Expiration Date

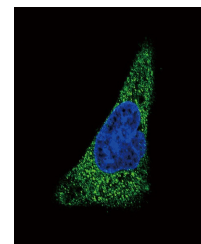
12 months from date of receipt.



Western Blot at 1:2000 dilution
Lane 1: ...



Western Blot at 1:2000 dilution
Lane 1: ...



Confocal immunofluorescent analysis of S...