

---

## Product Datasheet

### BMP7 Antibody (orb1268722)

**Description**

BMP7 Antibody

**Species/Host**

Rabbit

**Reactivity**

Human, Mouse

**Conjugation**

Unconjugated

**Tested Applications**

IHC-P, WB

**Immunogen**

This BMP7 antibody is generated from rabbits immunized with a KLH conjugated synthetic peptide between 280-309 amino acids from the C-terminal region of human BMP7.

**Target**

BMP7

**Preservatives**

Supplied in PBS with 0.09% (W/V) sodium azide.

**Form/Appearance**

Liquid

**Concentration**

batch dependent

**Storage**

Store at 4°C for three months and -20°C, stable for up to one year. As with all antibodies care should be taken to avoid repeated freeze thaw cycles. Antibodies should not be exposed to prolonged high temperatures.

**Note**

For research use only

**Application notes**

For WB starting dilution is: 1:1000 For IHC-P starting dilution is: 1:10~50

**Isotype**

Rabbit Ig

**Clonality**

Polyclonal

**MW**

49 kDa

**Uniprot ID**

[P18075](#)

**NCBI**

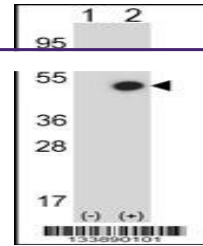
[P18075](#)

**Dilution Range**

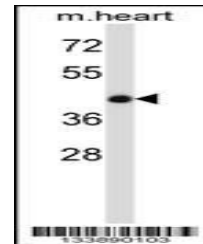
For WB starting dilution is: 1:1000 For IHC-P starting dilution is: 1:10~50

**Expiration Date**

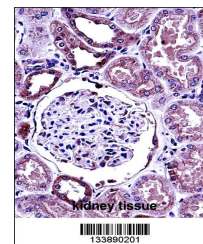
12 months from date of receipt.



Western blot analysis of BMP7 using rabb...



Western blot analysis in mouse heart tis...



BMP7 Antibody immunohistochemistry analy...