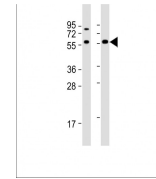


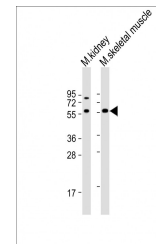
Product Datasheet

Acvr2b Antibody (orb1268689)

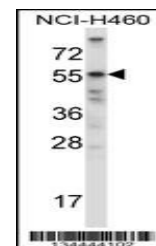
Description	Acvr2b Antibody
Species/Host	Rabbit
Reactivity	Human, Mouse
Conjugation	Unconjugated
Tested Applications	WB
Immunogen	This Mouse Acvr2b antibody is generated from rabbits immunized with a KLH conjugated synthetic peptide between 148-176 amino acids from the Central region of mouse Acvr2b.
Target	Acvr2b
Preservatives	Supplied in PBS with 0.09% (W/V) sodium azide.
Form/Appearance	Liquid
Concentration	batch dependent
Storage	Store at 4°C for three months and -20°C, stable for up to one year. As with all antibodies care should be taken to avoid repeated freeze thaw cycles. Antibodies should not be exposed to prolonged high temperatures.
Note	For research use only
Application notes	For WB starting dilution is: 1:1000
Isotype	Rabbit Ig
Clonality	Polyclonal
MW	61 kDa
Uniprot ID	P27040
NCBI	P27040
Dilution Range	For WB starting dilution is: 1:1000
Expiration Date	12 months from date of receipt.



Western Blot at 1:1000 dilution Lane 1: ...



Western Blot at 1:1000 dilution Lane 1: ...



Western blot analysis in NCI-H460 cell l...