
Product Datasheet

Mylk3 Antibody (orb1268683)

Description

Mylk3 Antibody

Species/Host

Rabbit

Reactivity

Mouse

Conjugation

Unconjugated

Tested

WB

Applications
Immunogen

This Mouse Mylk3 antibody is generated from rabbits immunized with a KLH conjugated synthetic peptide between 174-203 amino acids from the N-terminal region of mouse Mylk3.

Target

Mylk3

Preservatives

Supplied in PBS with 0.09% (W/V) sodium azide.

Form/Appearance

Liquid

Concentration

batch dependent

Storage

Store at 4°C for three months and -20°C, stable for up to one year. As with all antibodies care should be taken to avoid repeated freeze thaw cycles. Antibodies should not be exposed to prolonged high temperatures.

Note

For research use only

Application notes

For WB starting dilution is: 1:2000

Isotype

Rabbit Ig

Clonality

Polyclonal

MW

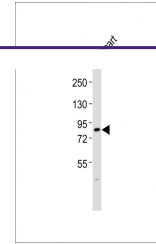
86 kDa

Uniprot ID
[Q3UIZ8](#)
NCBI
[Q3UIZ8](#)
Dilution Range

For WB starting dilution is: 1:2000

Expiration Date

12 months from date of receipt.



Western Blot
at 1:2000
dilution +
mouse ...