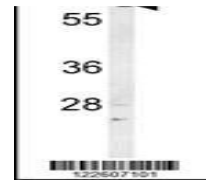
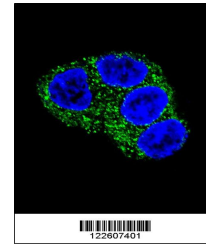

Product Datasheet

UGT1A1 Antibody (orb1268663)

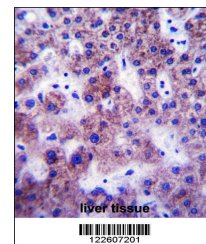
Description	UGT1A1 Antibody
Species/Host	Rabbit
Reactivity	Human
Conjugation	Unconjugated
Tested Applications	IF, IHC-P, WB
Immunogen	This UGT1A1 antibody is generated from rabbits immunized with a KLH conjugated synthetic peptide between 65-90 amino acids from the N-terminal region of human UGT1A1.
Target	UGT1A1
Preservatives	Supplied in PBS with 0.09% (W/V) sodium azide.
Form/Appearance	Liquid
Concentration	batch dependent
Storage	Store at 4°C for three months and -20°C, stable for up to one year. As with all antibodies care should be taken to avoid repeated freeze thaw cycles. Antibodies should not be exposed to prolonged high temperatures.
Note	For research use only
Application notes	For WB starting dilution is: 1:1000For IF starting dilution is: 1:10~50For IHC-P starting dilution is: 1:10~50
Isotype	Rabbit Ig
Clonality	Polyclonal
MW	60 kDa
Uniprot ID	P22309
NCBI	P22309
Dilution Range	For WB starting dilution is: 1:1000For IF starting dilution is: 1:10~50For IHC-P starting dilution is: 1:10~50
Expiration Date	12 months from date of receipt.



Western blot analysis in HepG2 cell line...



Confocal immunofluorescent analysis of U...



UGT1A1 Antibody immunohistochemistry ana...