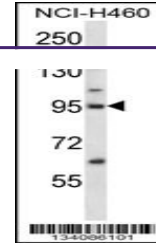


Product Datasheet

KIF2C Antibody (orb1268598)

Description	KIF2C Antibody
Species/Host	Rabbit
Reactivity	Human
Conjugation	Unconjugated
Tested Applications	WB
Immunogen	This KIF2C antibody is generated from rabbits immunized with a KLH conjugated synthetic peptide between 180-208 amino acids from the N-terminal region of human KIF2C.
Target	KIF2C
Preservatives	Supplied in PBS with 0.09% (W/V) sodium azide.
Form/Appearance	Liquid
Concentration	batch dependent
Storage	Store at 4°C for three months and -20°C, stable for up to one year. As with all antibodies care should be taken to avoid repeated freeze thaw cycles. Antibodies should not be exposed to prolonged high temperatures.
Note	For research use only
Application notes	For WB starting dilution is: 1:1000
Isotype	Rabbit Ig
Clonality	Polyclonal
MW	81 kDa
Uniprot ID	Q99661
NCBI	Q99661
Dilution Range	For WB starting dilution is: 1:1000
Expiration Date	12 months from date of receipt.



Western blot analysis in NCI-H460 cell l...