
Product Datasheet

NDUFAB1 Antibody (orb1268532)

Description

NDUFAB1 Antibody

Species/Host

Rabbit

Reactivity

Human

Conjugation

Unconjugated

Tested

IHC-P, WB

Applications
Immunogen

This NDUFAB1 antibody is generated from rabbits immunized with a KLH conjugated synthetic peptide between 128-156 amino acids from the C-terminal region of human NDUFAB1.

Target

NDUFAB1

Preservatives

Supplied in PBS with 0.09% (W/V) sodium azide.

Form/Appearance

Liquid

Concentration

batch dependent

Storage

Store at 4°C for three months and -20°C, stable for up to one year. As with all antibodies care should be taken to avoid repeated freeze thaw cycles. Antibodies should not be exposed to prolonged high temperatures.

Note

For research use only

Application notes

For WB starting dilution is: 1:1000 For IHC-P starting dilution is: 1:10~50

Isotype

Rabbit IgG

Clonality

Polyclonal

MW

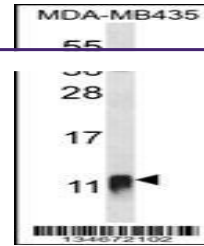
17 kDa

Uniprot ID
[O14561](#)
NCBI
[O14561](#)
Dilution Range

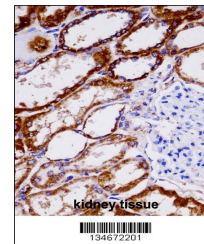
For WB starting dilution is: 1:1000 For IHC-P starting dilution is: 1:10~50

Expiration Date

12 months from date of receipt.



Western blot analysis in MDA-MB435 cell ...



NDUFAB1 immunohistochemistry analysis in...