
Product Datasheet

SPN Antibody (orb1268530)

Description

SPN Antibody

Species/Host

Rabbit

Reactivity

Human

Conjugation

Unconjugated

Tested Applications

IHC-P, WB

Immunogen

This SPN/CD43 antibody is generated from rabbits immunized with a KLH conjugated synthetic peptide between 32-60 amino acids from the N-terminal region of human SPN/CD43.

Target

SPN

Preservatives

Supplied in PBS with 0.09% (W/V) sodium azide.

Form/Appearance

Liquid

Concentration

batch dependent

Storage

Store at 4°C for three months and -20°C, stable for up to one year. As with all antibodies care should be taken to avoid repeated freeze thaw cycles. Antibodies should not be exposed to prolonged high temperatures.

Note

For research use only

Application notes

For WB starting dilution is: 1:1000 For IHC-P starting dilution is: 1:10~50

Isotype

Rabbit Ig

Clonality

Polyclonal

MW

40 kDa

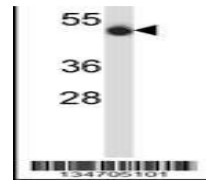
Uniprot ID
[P16150](#)
NCBI
[P16150](#)
Dilution Range

For WB starting dilution is: 1:1000 For IHC-P starting dilution is: 1:10~50

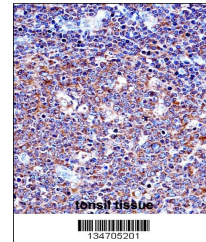
Expiration Date

12 months from date of receipt.

MDA-MB435



Western blot analysis in MDA-MB435 cell ...



SPN/CD43 Antibody immunohistochemistry a...