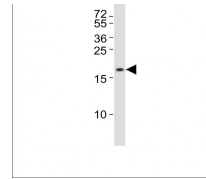
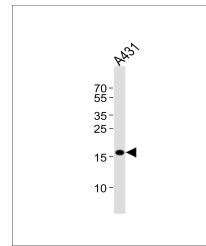

Product Datasheet

DUT Antibody (orb1268480)

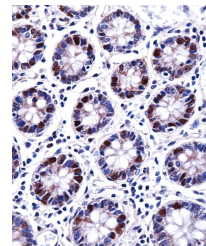
Description	DUT Antibody
Species/Host	Rabbit
Reactivity	Human
Conjugation	Unconjugated
Tested Applications	IHC-P, WB
Immunogen	This DUT antibody is generated from rabbits immunized with a KLH conjugated synthetic peptide between 170-198 amino acids from the C-terminal region of human DUT.
Target	DUT
Preservatives	Supplied in PBS with 0.09% (W/V) sodium azide.
Form/Appearance	Liquid
Concentration	batch dependent
Storage	Store at 4°C for three months and -20°C, stable for up to one year. As with all antibodies care should be taken to avoid repeated freeze thaw cycles. Antibodies should not be exposed to prolonged high temperatures.
Note	For research use only
Application notes	For WB starting dilution is: 1:1000 For IHC-P starting dilution is: 1:10~50
Isotype	Rabbit Ig
Clonality	Polyclonal
MW	27 kDa
Uniprot ID	P33316
NCBI	P33316
Dilution Range	For WB starting dilution is: 1:1000 For IHC-P starting dilution is: 1:10~50
Expiration Date	12 months from date of receipt.



Western Blot at 1:1000 dilution + SW620 ...



Western blot analysis of lysate from A43...



DUT Antibody immunohistochemistry analys...