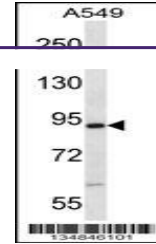
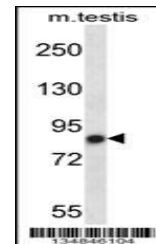

Product Datasheet

Nek4 Antibody (orb1268430)

Description	Nek4 Antibody
Species/Host	Rabbit
Reactivity	Human, Mouse
Conjugation	Unconjugated
Tested Applications	WB
Immunogen	This Mouse Nek4 antibody is generated from rabbits immunized with a KLH conjugated synthetic peptide between 74-101 amino acids from the N-terminal region of mouse Nek4.
Target	Nek4
Preservatives	Supplied in PBS with 0.09% (W/V) sodium azide.
Form/Appearance	Liquid
Concentration	batch dependent
Storage	Store at 4°C for three months and -20°C, stable for up to one year. As with all antibodies care should be taken to avoid repeated freeze thaw cycles. Antibodies should not be exposed to prolonged high temperatures.
Note	For research use only
Application notes	For WB starting dilution is: 1:1000
Isotype	Rabbit Ig
Clonality	Polyclonal
MW	89 kDa
Uniprot ID	Q9Z1J2
NCBI	Q9Z1J2
Dilution Range	For WB starting dilution is: 1:1000
Expiration Date	12 months from date of receipt.



Western blot analysis in A549 cell line ...



Western blot analysis in mouse testis ti...