
Product Datasheet

PITX2 Antibody (orb1268408)

Description

PITX2 Antibody

Species/Host

Rabbit

Reactivity

Human

Conjugation

Unconjugated

Tested Applications

IF, WB

Immunogen

This PITX2 antibody is generated from rabbits immunized with a KLH conjugated synthetic peptide between 122-151 amino acids of human PITX2.

Target

PITX2

Preservatives

Supplied in PBS with 0.09% (W/V) sodium azide.

Form/Appearance

Liquid

Concentration

batch dependent

Storage

Store at 4°C for three months and -20°C, stable for up to one year. As with all antibodies care should be taken to avoid repeated freeze thaw cycles. Antibodies should not be exposed to prolonged high temperatures.

Note

For research use only

Application notes

For IF starting dilution is: 1:10~50
For WB starting dilution is: 1:1000

Isotype

Rabbit Ig

Clonality

Polyclonal

MW

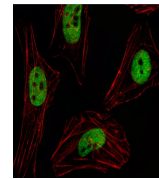
35 kDa

Uniprot ID
[Q99697](#)
NCBI
[Q99697](#)
Dilution Range

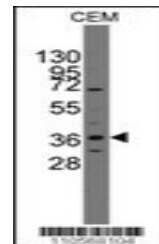
For IF starting dilution is: 1:10~50
For WB starting dilution is: 1:1000

Expiration Date

12 months from date of receipt.



Fluorescent image of HeLa cell stained w...



Western blot analysis of anti-Pitx2 Pab ...