

Product Datasheet

Map2k3 Antibody (orb1268304)

Description

Map2k3 Antibody

Species/Host

Rabbit

Reactivity

Human, Mouse

Conjugation

Unconjugated

Tested Applications

WB

Applications
Immunogen

This Mouse Map2k3 antibody is generated from rabbits immunized with a KLH conjugated synthetic peptide between 132-160 amino acids from the Central region of mouse Map2k3.

Target

Map2k3

Preservatives

Supplied in PBS with 0.09% (W/V) sodium azide.

Form/Appearance

Liquid

Concentration

batch dependent

Storage

Store at 4°C for three months and -20°C, stable for up to one year. As with all antibodies care should be taken to avoid repeated freeze thaw cycles. Antibodies should not be exposed to prolonged high temperatures.

Note

For research use only

Application notes

For WB starting dilution is: 1:1000

Isotype

Rabbit Ig

Clonality

Polyclonal

MW

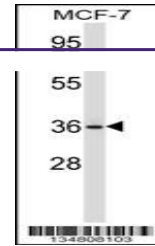
39 kDa

Uniprot ID
[O09110](#)
NCBI
[O09110](#)
Dilution Range

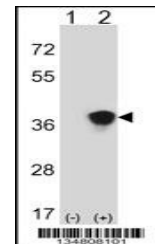
For WB starting dilution is: 1:1000

Expiration Date

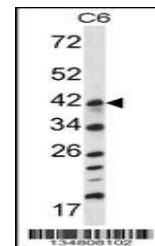
12 months from date of receipt.



Western blot analysis in MCF-7 cell line...



Western blot analysis of Map2k3 using ra...



Western blot analysis in C6 cell line ly...