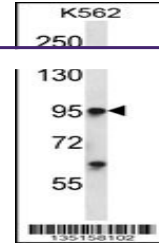
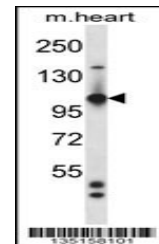

Product Datasheet

Tie1 Antibody (orb1268286)

Description	Tie1 Antibody
Species/Host	Rabbit
Reactivity	Human, Mouse
Conjugation	Unconjugated
Tested Applications	WB
Immunogen	This Mouse Tie1 antibody is generated from rabbits immunized with a KLH conjugated synthetic peptide between 361-389 amino acids from the Central region of mouse Tie1.
Target	Tie1
Preservatives	Supplied in PBS with 0.09% (W/V) sodium azide.
Form/Appearance	Liquid
Concentration	batch dependent
Storage	Store at 4°C for three months and -20°C, stable for up to one year. As with all antibodies care should be taken to avoid repeated freeze thaw cycles. Antibodies should not be exposed to prolonged high temperatures.
Note	For research use only
Application notes	For WB starting dilution is: 1:1000
Isotype	Rabbit Ig
Clonality	Polyclonal
MW	125 kDa
Uniprot ID	Q06806
NCBI	Q06806
Dilution Range	For WB starting dilution is: 1:1000
Expiration Date	12 months from date of receipt.



Western blot analysis in K562 cell line ...



Western blot analysis in mouse heart tis...