
Product Datasheet

IDE Antibody (orb1268222)

Description

IDE Antibody

Species/Host

Rabbit

Reactivity

Human, Mouse

Conjugation

Unconjugated

Tested Applications

IHC-P, WB

Immunogen

This IDE antibody is generated from rabbits immunized with a KLH conjugated synthetic peptide between 406-435 amino acids from the Central region of human IDE.

Target

IDE

Preservatives

Supplied in PBS with 0.09% (W/V) sodium azide.

Form/Appearance

Liquid

Concentration

batch dependent

Storage

Store at 4°C for three months and -20°C, stable for up to one year. As with all antibodies care should be taken to avoid repeated freeze thaw cycles. Antibodies should not be exposed to prolonged high temperatures.

Note

For research use only

Application notes

For WB starting dilution is: 1:2000 For IHC-P starting dilution is: 1:10~50

Isotype

Rabbit Ig

Clonality

Polyclonal

MW

118 kDa

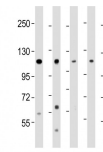
Uniprot ID
[P14735](#)
NCBI
[P14735](#)
Dilution Range

For WB starting dilution is: 1:2000 For IHC-P starting dilution is: 1:10~50

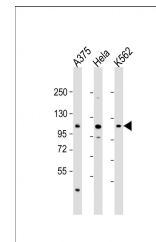
Expiration Date

12 months from date of receipt.

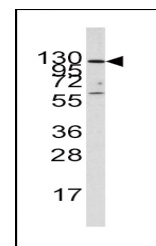
Western blot analysis of anti-IDE antibody



Western Blot at 1:2000 dilution Lane 1: ...



Western Blot at 1:2000 dilution Lane 1: ...



Western blot analysis of anti-IDE Antibody...