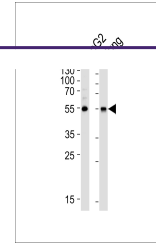


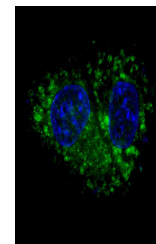
Product Datasheet

ALDH1A1 Antibody (orb1268147)

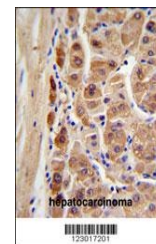
Description	ALDH1A1 Antibody
Species/Host	Rabbit
Reactivity	Human
Conjugation	Unconjugated
Tested Applications	FC, IF, IHC-P, WB
Immunogen	This ALDH1A1 antibody is generated from rabbits immunized with human ALDH1A1 recombinant protein.
Target	ALDH1A1
Preservatives	Supplied in PBS with 0.09% (W/V) sodium azide.
Form/Appearance	Liquid
Concentration	batch dependent
Storage	Store at 4°C for three months and -20°C, stable for up to one year. As with all antibodies care should be taken to avoid repeated freeze thaw cycles. Antibodies should not be exposed to prolonged high temperatures.
Note	For research use only
Application notes	For WB starting dilution is: 1:1000 For IF starting dilution is: 1:100 For IHC-P starting dilution is: 1:50~100 For FACS starting dilution is: 1:10~50
Isotype	Rabbit Ig
Clonality	Polyclonal
MW	55 kDa
Uniprot ID	P00352
NCBI	P00352
Dilution Range	For WB starting dilution is: 1:1000 For IF starting dilution is: 1:100 For IHC-P starting dilution is: 1:50~100 For FACS starting dilution is: 1:10~50
Expiration Date	12 months from date of receipt.



Western blot analysis of lysates from He...



Fluorescent confocal image of HepG2 cell...



ALDH1A1 Antibody IHC analysis in formali...